

Technology that simply connects.

HAAS[®]
Nürnberg 

Since over 70 years quality & innovation for the plumbing trade.

**COMPLETELY
SEAL?**

**...EVEN WITH US ACC. TO
DIN 18534-1!**

**OHA-WATER & SOUND INSULATION PRODUCTS
ACC. DIN 18534-1 ...so you seal off!**



**Inclusive
product samples**



OHA-WATER & SOUND INSULATION & ACC

ACC. DIN 18534-1

...so you seal off!

4394

OHA-Water-Protecttape

Is a bathtub sealing tape, behind the whole surface is glued an additional security to

Installation between wall and tub for the professional installation of shower and bathtubs.

Due to the integrated water-impermeable fleece is used as second water barrier behind the silicone joint ensure that there is no water between the tub and Wall can penetrate. Acc. to **DIN 18534-1**

- especially suitable for falling water like e.g. in showers
- ideal for preventing moisture penetration
- packed individually in an attractive display box!



4396 - 4398

OHA-Easy-2-Protecttape

For double-safety shower and bathtubs: sound-proof and waterproof! The extra security for mounting between wall and bathtub at the pro-



professional installation of Shower and bathtubs. Through the integrated impermeable fleece is ensured as a second water barrier behind the silicone joint that no water penetrate between the tub and the wall can. With corner filling profile and 8 mm joint tape. Acc. to **DIN 18534-1**

- especially suitable for falling water like e.g. in showers
- ideal for preventing moisture penetration
- self-adhesive for perfect water and sound insulation
- packed individually in an attractive display box!

4401

OHA-Cornerfillprofile

For Easy-2-Protectband and other tub sealing tapes, optimal for gaps seal - an additional security at the sealing.



- with radius and corner shape template
- Ø 6 x 30 mm

4404

OHA-Fill- and Protectcord



10 Meter long and 8 mm thick for 6 mm Fugues. No collapse of the silicone joint and protects the tub sealing tape.

- Time savings when changing joints
- fast and easy processing
- also for retrofitting

4410

OHA-Universal-Cut resistant tape

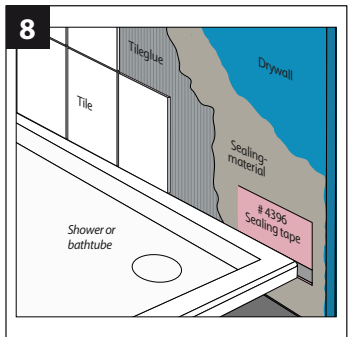
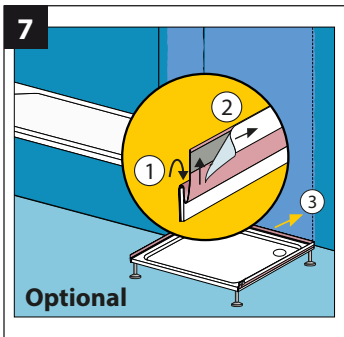
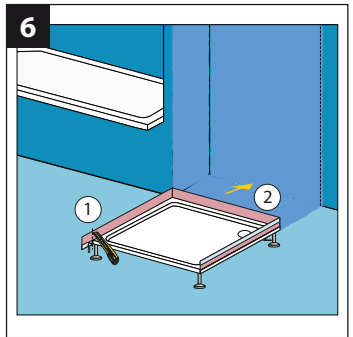
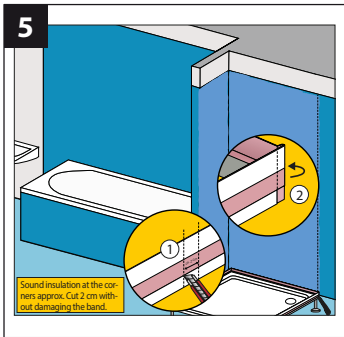
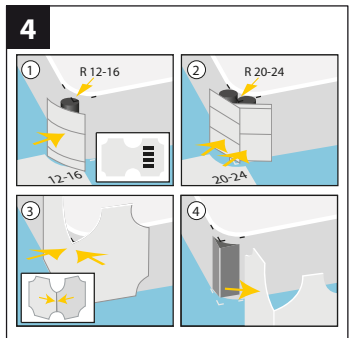
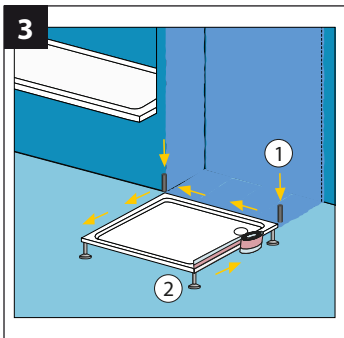
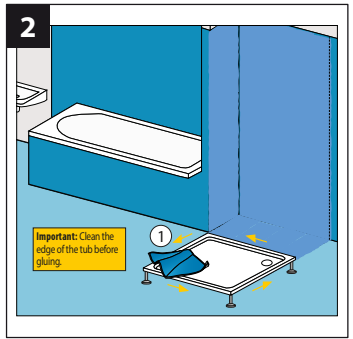
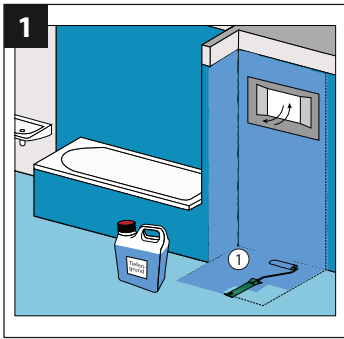
25 mm wide and 10 meters long. For an additional cutprotection To protect the seal either directly on our OHA-Easy-2-Protectband or on the last layer the composite seal are attached.



- quick and easy processing
- self-adhesive

QUALITY PRODUCTS MADE BY **HAAS...**
...Innovative! **Permanently!** For sure!



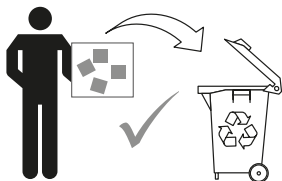
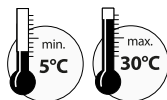


Please note:

- No interfaces in the complete scope of the tub
- Note the slope of the pan in the direction of the drain
- Defective silicone joints must be repaired promptly
- The butyl tape is thermoplastic and very soft, which can deform it by prolonged storage.
- When gluing, make sure that the butyl adhesive is adhered carefully and over the entire surface.



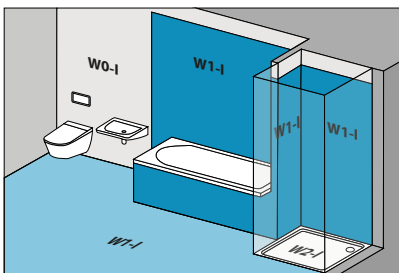
Processing temperature



The additional **Sicherheit** for the installation between wall and tub with professional installation. According to **DIN 18534-1** Sealing of interiors (Part 1: Requirements, planning & execution principles).

W1-I: Areas with not frequent spray water. Without intensive burden of backwater.

W2-I: Areas with frequent spray and industrial water. Intensive load of backwater.



Prevents mold growth and is ideal for preventing moisture penetration, self-adhesive for perfect water and sound insulation. Particularly suitable for falling water, e.g. in showers.

Sound and water protection already glued and ready to use!

OTTO HAAS KG

Gießener Straße 5

90427 Nürnberg

Web: www.haas.de

E-Mail: info@haas.de