



Art.-Nr. 7828

- | | | | |
|--|--|--|---|
| | <p>1. The support surface provides an exact uniform bending over the entire width of the machine frames at right angles to the support surface.</p> | | <p>2. If both handles are screwed to the front, the maximum bending angle is 110°. For angles over 110°, the left handle has to be screwed into the left side thread, so that a maximum bend angle of 135° can be achieved.</p> |
| | <p>3. If the force is high or bending with one hand, the bending rod can be clamped in a vice. For fastening in a vice, the shoulder on the underside of the bending tongs must be inserted between the clamping jacks in the vice and screwed tightly. As a result, a strong leverage effect can be achieved with little force expenditure.</p> | | <p>4. The joint must be regularly lubricated.</p> |

Our **hand pliers "Guido"** offers the possibility to bend the desired angle as often as possible in excellent quality. Both ergonomically shaped handles have a plastic coating and provide an **excellent feel** that prevents slipping.

Application examples:



Mounting angle 45°, 90°, 135°



Fixing for wall mounting siphon



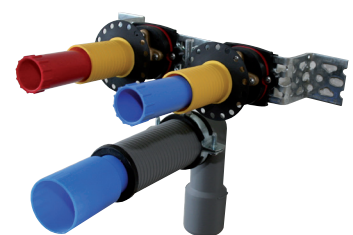
Brackets for pipelines



Brackets for pipelines



Stub for water inlet or brass connection angle



Stub for water in- and outlet connection angle