

Technology that simply connects.



Since over 75 years quality & innovation for the plumbing trade.

HTEA-SLIDING-SLEEVE DN 110/110

ACC. TO DIN 4102-1 (B1), DIN EN 1451-1 AND DIN EN 681-1 (SEALINGS)

FOR SUBSEQUENT CONNECTION / INSTALLATION / REPAIR TO EXISTING HT PIPES DN 110. MADE OF IMPACT-RESISTANT POLYPROPYLENE, TESTED IN ACCORDANCE WITH FIRE PROTECTION REQUIREMENTS DIN 4102-1 (B1) FOR FLAME-RETARDANT BUILDING MATERIALS. ATTACHMENT TO DOWNPIPE SIMPLE & PROCESS-SAFE DUE TO LOCKING MECHANISM. SIMPLE ASSEMBLY, CUT OUT ONLY 27 OR 33 CM.



Item-No. 6681

**OHA-HTEA-SLIDING-BRANCH
"Tara"
DN 110/110**

- for installation on an existing HT-Pipe DN 110 (in cavity floors)
- made of impact resistant polypropylene
- complete with all seals (EPDM), resistant to aging and weathering according to DIN EN 681-1
- according to DIN 4102-1 (B1)
- Approval-Nr.: Z-42.1-598



Item-No. 6682

**OHA-HTEA-SLIDING-BRANCH
"Lukas"
DN 110/110**

- for installation on an existing HT-Pipe DN 110 (in cavity floors)
- made of impact resistant polypropylene
- complete with all seals (EPDM), resistant to aging and weathering according to DIN EN 681-1
- According to DIN 4102-1 (B1)
- Approval-Nr.: Z-42.1-598



Item-No. 6683

**OHA-HTEA-SLIDING-BRANCH
"Myriam"
DN 110/110**

- for installation on an existing HT-Pipe DN 110 (in concrete slabs)
- made of impact resistant polypropylene
- complete with all seals (EPDM), resistant to aging and weathering according to DIN EN 681-1
- according to DIN 4102-1 (B1)
- Approval-Nr.: Z-42.1-598



Item-No. 6685

**OHA-HTEA-REPAIR SLIDING
SLEEVE "Michaela"
DN 110/110**

- for installation on a damaged HT-Pipe DN 110 (for repair)
- made of impact resistant polypropylene
- complete with all seals (EPDM), resistant to aging and weathering according to DIN EN 681-1
- according to DIN 4102-1 (B1)



Item-No. 6686

**OHA-Plug-in branch
"Torsten"
DN 110/110**

- for installation on an existing HT-Pipe DN 110 (concrete slabs)
- made of impact resistant polypropylene
- complete with all seals (EPDM), resistant to aging and weathering according to DIN EN 681-1
- According to DIN 4102-1 (B1)
- Approval-Nr.: Z-42.1-598

Installation example Myriam

In just 4 steps to the perfect result



1. HT / KG pipe 33 cm cut out



2. Sliding sleeve push over upper tube



3. Plug the plug-in branch into the lower tube



4. Sliding sleeve in the push plug branch



5. Done!!!



QUALITY PRODUCTS MADE BY **HAAS** – Innovative! **Permanently!** For sure!

Gießener Str. 5 • 90427 Nürnberg • Phone +49 911 9366-0 • www.haas.de • info@haas.de

Technology that simply connects.



Since over 75 years quality & innovation for the plumbing trade.

HTEA-SLIDING-BRANCH FOR THICKWALL PIPES DN 110/110

For subsequent connection / installation to existing lines: SML DN 110, Geberit-Silent-PP® DN 100, Geberit-PE-Pipe® DN 100, PoloKAL-NG® DN 110 and Euro2000® DN 100. Attachment to down-pipe easy and process-safe by locking. Cut out only 33 cm and connect height 67 mm from middle.

Item-No. 6688

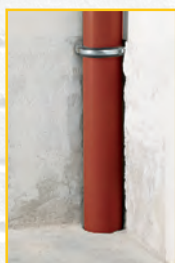
OHA-SLIDING-BRANCH "Manuel" DN 110/110

- for SML, PE and POLO-KAL® for installation on an existing HT-Pipe DN 110 (in concrete slabs)
- made of impact resistant polypropylene
- complete with all seals (EPDM), resistant to aging and weathering according to DIN EN 681-1
- According to DIN 4102-1 (B1)
- Approval-Nr.: Z-42.1-598



Installation example "Manuel"

In just 4 steps to the perfect result



1. Existing pipe 33 cm cut out



2. Sliding sleeve push over upper tube



3. Plug the plug-in branch into the lower tube



4. Push the sliding branch into the sleeve of the plug-in branch



5. Either way - done!!!

MADE IN GERMANY

Installation example "Hans"

In just 4 steps to the perfect result



1. Existing pipe 33 cm cut out



2. Sliding sleeve push over upper tube



3. Plug the plug-in branch into the lower tube



4. Sliding sleeve in the push plug branch



5. Done!!!

Item-No. 6687

OHA-SLIDING-BRANCH "Hans" DN 110/110

- for installation on an existing HT-Pipe DN 110 (in concrete slabs)
- Plug end to spigot end compatible for Geberit® Silent-PP DN 110 x 3,4 (Wall thickness), POLO-KAL® NG DN 110 x 3,4 and SML DN 110
- made of impact resistant polypropylene
- complete with all seals (EPDM), resistant to aging and weathering according to DIN EN 681-1
- According to DIN 4102-1 (B1)
- Approval-Nr.: Z-42.1-598

