

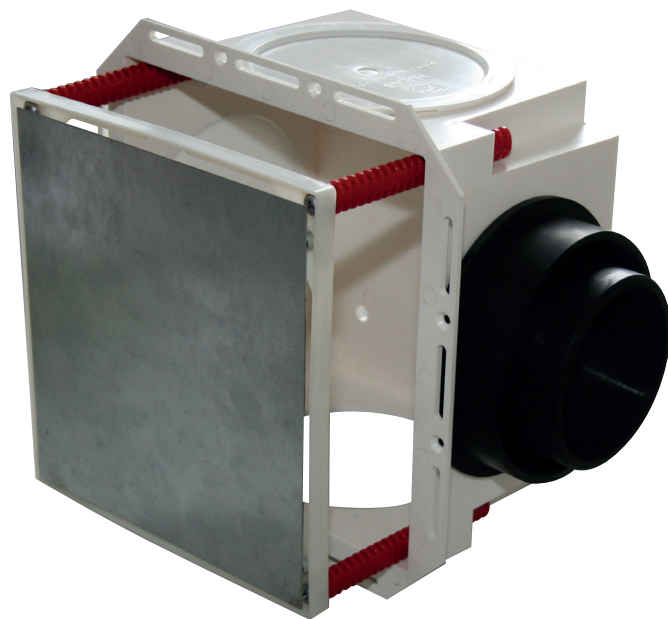
Wall recessed box

OHA-Wall recessed box small tileable

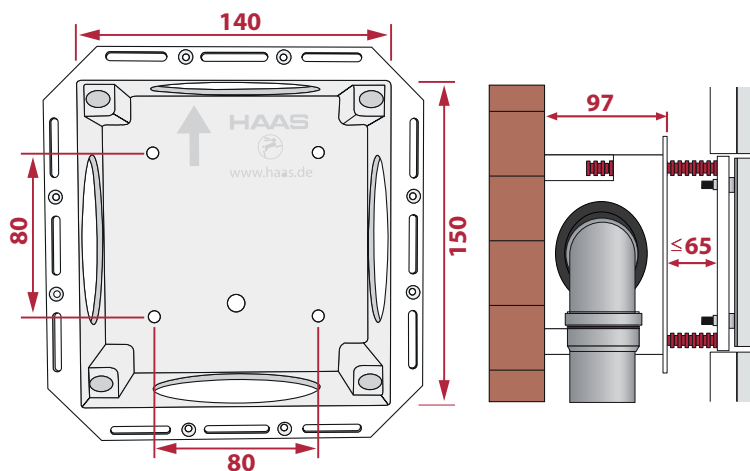
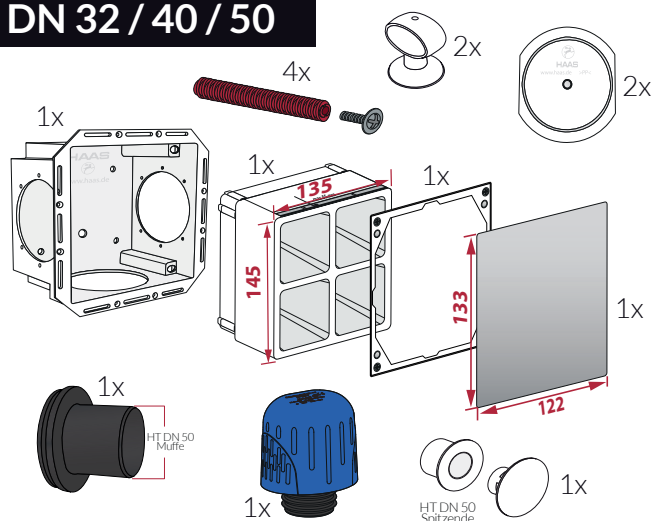
#5496 without Pipe-Vent
#5497 with Pipe-Vent DN 32/40/50

OHA-Wall recessed box large tileable

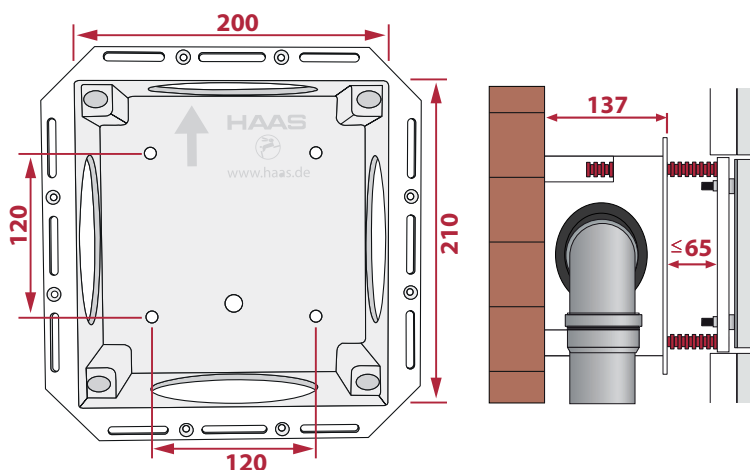
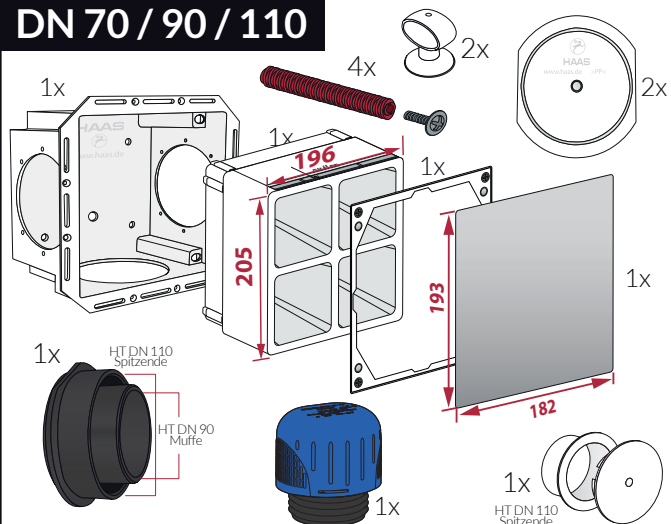
#5511 without Pipe-Vent
#5512 with Pipe-Vent DN 70/90/110

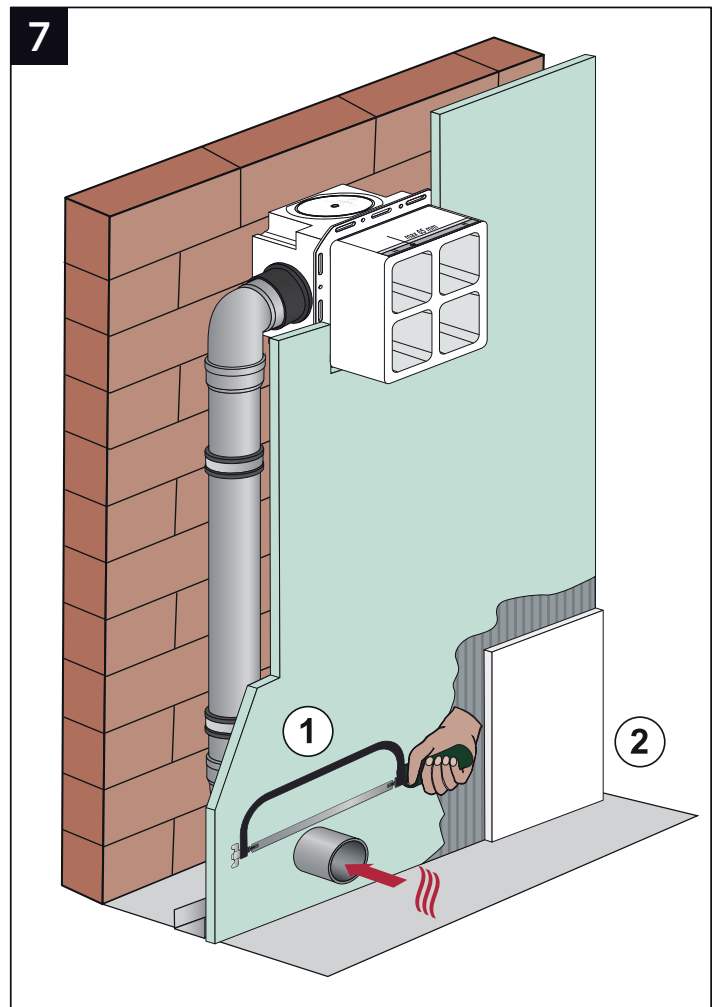
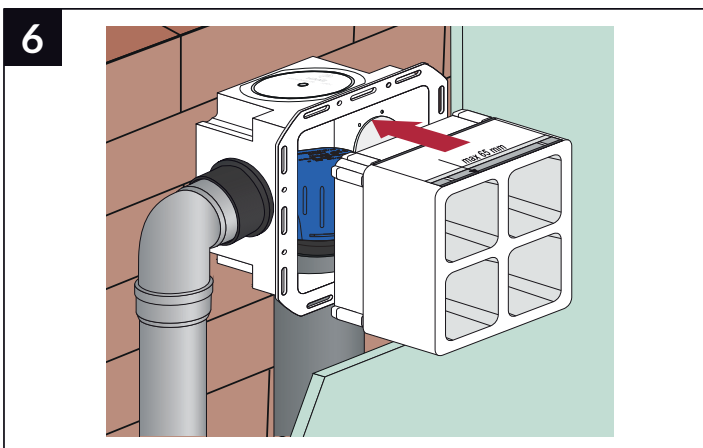
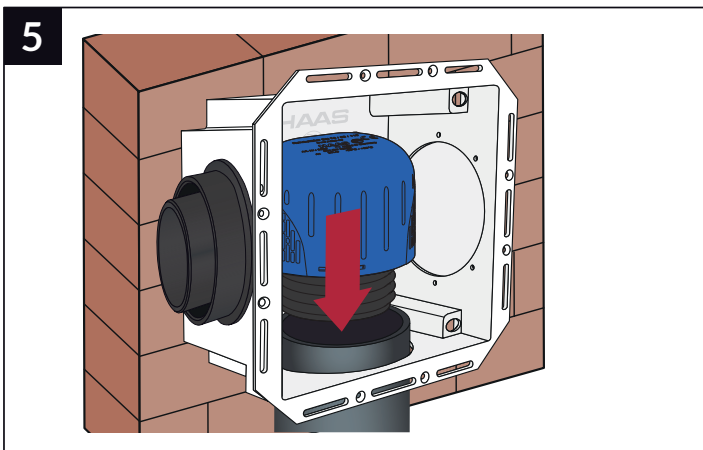
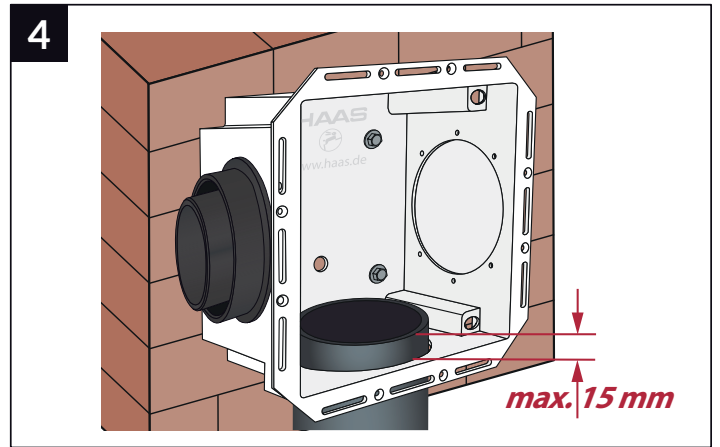
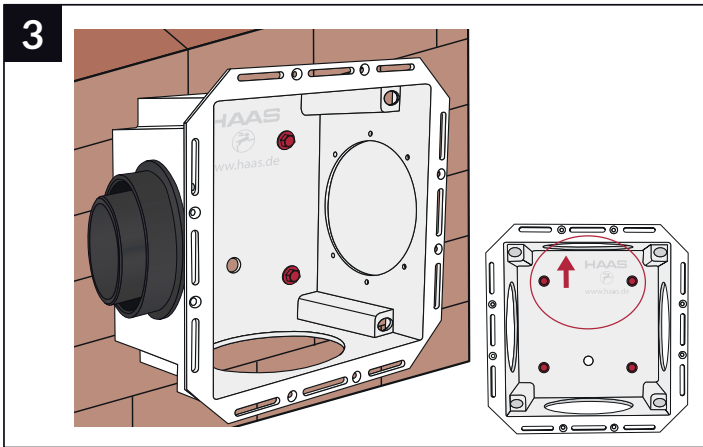
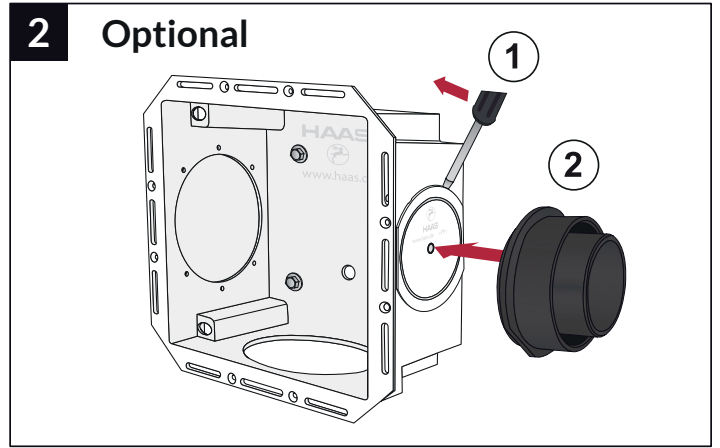
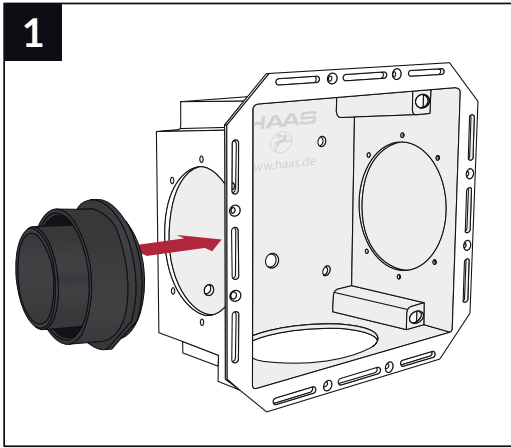


DN 32 / 40 / 50



DN 70 / 90 / 110





9

10

11

Diagram 11 illustrates the step of tightening the door handle. A screwdriver is shown turning a screw on the handle mechanism. Red arrows indicate the direction of the screwdriver's movement and the resulting tightening of the handle.

12

A technical line drawing of a window frame assembly. The drawing shows a cross-section of the frame with a red roller or seal component installed. The roller is positioned within a channel of the frame. The frame is divided into several rectangular sections by muntins. The drawing is labeled with the number '12' in a black box in the top left corner.

13

Diagram 13 illustrates the correct and incorrect installation of the door handle. The left side shows the correct installation, where the handle is centered on the door edge. The right side shows an incorrect installation, marked with a red X and a red arrow indicating the misalignment.

14

The image contains two technical diagrams illustrating the correct installation of a door hinge. The left diagram shows a side view of a door hinge being mounted onto a door edge. It features a brown door, a silver hinge cup, and a silver hinge plate. Red dashed lines and arrows indicate the correct alignment and placement of the hinge components. The right diagram shows a top-down view of the hinge assembly. It highlights the correct placement of the hinge plate relative to the door edge, with a red arrow and the letter 'X' indicating the correct distance from the edge. A large red checkmark is placed below the diagram to signify that this is the correct installation method.

